

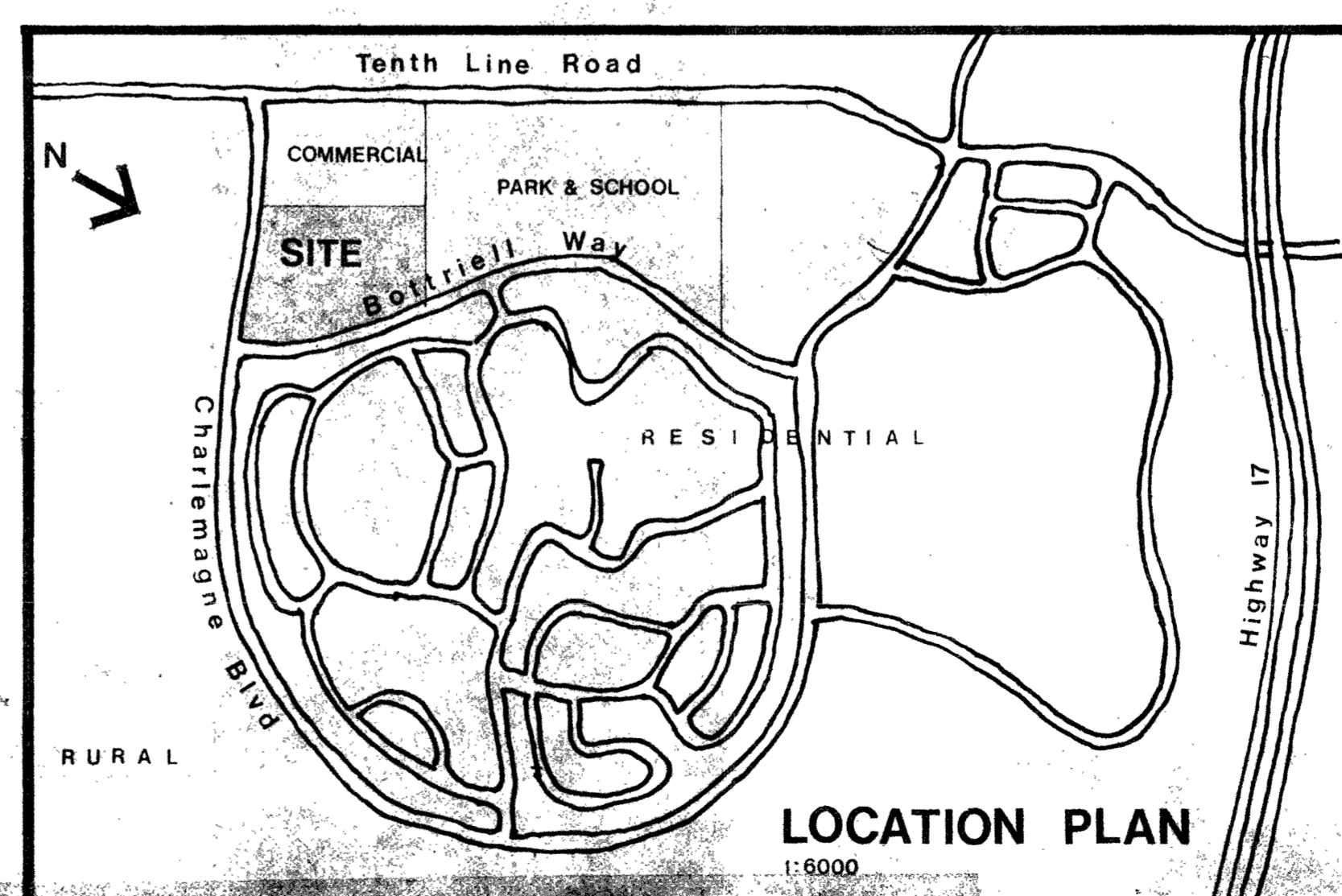
DEVELOPMENT DATA

SITE AREA: 13.8 ACRES / 5.58 HA (55,848 m²)
 SITE ZONING: R5A
 TOTAL NUMBER OF DWELLING UNITS: 270
 PARKING PROVIDED AT 1.5 CARS/UNIT: 405 CARS
 SITE DENSITY: 19.56 UNITS/ACRE (48.39 UNITS/HA)
 BUILDING COVERAGE: 11,977 m² (21.44%)

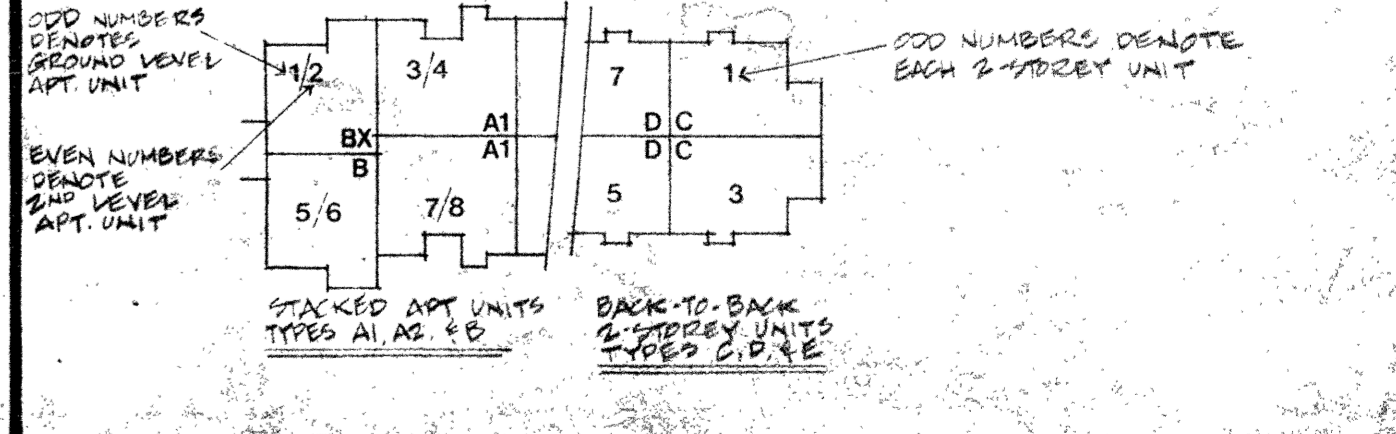
SCHEDULE OF ACCOMMODATION:

STACKED APARTMENT UNIT	NO. OF UNITS	FLOOR AREA/UNIT	BUILDING COVERAGE
TYPE A1: 1 BEDRM. UNITS GRND. FLR. APT. 2ND FLR. APT.	32	67.90 m ² 25.63 m ²	77.50 m ²
TYPE A2: 2 BEDRM. UNITS GRND. FLR. APT. 2ND FLR. APT.	40	80.06 m ² 95.80 m ²	91.61 m ²
TYPE B: 1 BEDRM. UNITS GRND. FLR. APT. 2ND FLR. APT.	32	69.78 m ² 80.53 m ²	70.11 m ²
TWO STOREY UNITS			
TYPE C: 3 BEDRM. UNIT	20	126.70 m ²	82.00 m ²
TYPE D: 2 BEDRM. UNIT	22	109.68 m ²	59.76 m ²
TYPE E: 3 BEDRM. UNIT	20	110.76 m ²	54.12 m ²

NOTE: PARKING SPACE IDENTIFICATION NUMBERS FIRST NUMBER INDICATES BLOCK NUMBER SECOND NUMBER INDICATES UNIT WITHIN BLOCK AFTER THE DASHED LINE INDICATES PARKING SPACE



1. REFERENCES TYPICAL WALL UNIT TYPES C, D, E (INCLUDING 6X, 6X, 6X) - IN THE TYPE A AND B UNITS (INCLUDING 2X, BY, A1, A2, A2X) FIREWALLS OCCUR ONLY ON THE UPPER LEVEL APARTS OF UNITS DESIGNATED WITH (F)
2. UNIT TYPES INDICATED WITH 'N' OR 'Y' REFER TO UNITS WITH ALTERNATE FRONT ELEVATIONS (REFER TO UNIT PLANS)
3. UNITS INDICATED WITH (R) DENOTE REVERSED FLOOR PLANS
4. ALL ROAD AND PARKING AREAS TO BE ASPHALT SURFACES WITH 150MM WIDE CONCRETE CURBS
5. PARKING SPACES INDICATED WITH 'V' DENOTE VISITOR PARKING
6. DRAWING UNIT NUMBERS SHOWN BELOW FOR EACH HOUSING BLOCK INDICATED ON SITE PLAN



NOTE: --- INDICATES DESIGNATED FIRE ROUTE WITH 150MM RATED ASPHALT CUMBERLAND FIRE UNIT REQUIREMENTS